

Official match day magazine price 8p

SWINDON TOWN

FOOTBALL CLUB



Season 1974-75

Football League, Third Division
SWINDON TOWN

Wednesday, 2nd October, 1974

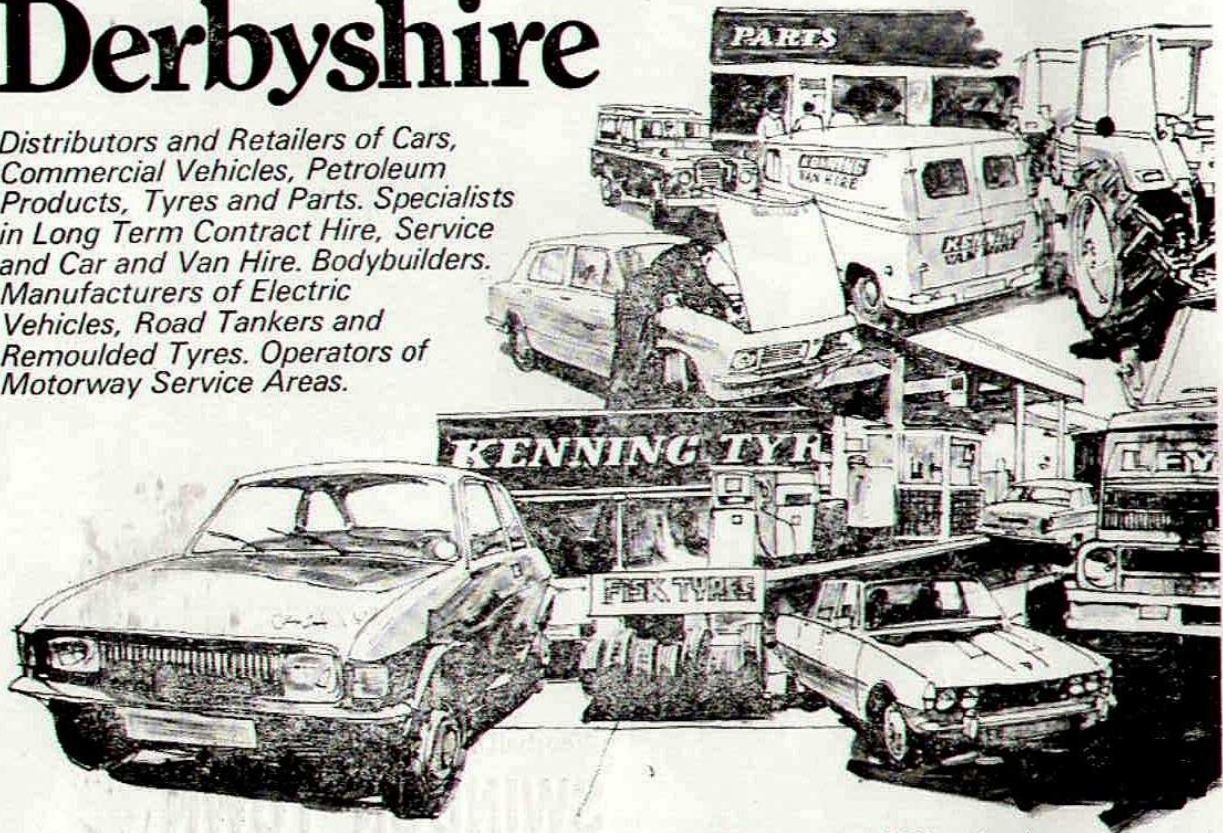
Kick-off 7.15 pm

LUCKY PROGRAMME

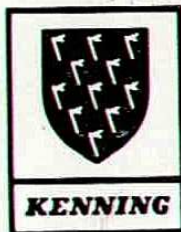
Nº 0811

Kenning Motor Group serve the motorist and motor trade in Derbyshire

*Distributors and Retailers of Cars,
Commercial Vehicles, Petroleum
Products, Tyres and Parts. Specialists
in Long Term Contract Hire, Service
and Car and Van Hire. Bodybuilders.
Manufacturers of Electric
Vehicles, Road Tankers and
Remoulded Tyres. Operators of
Motorway Service Areas.*



Over 300 depots in U.K., Ireland, France and Rhodesia.



KENNING MOTOR GROUP

Head Office: Manor Offices, Old Road, Chesterfield. Tel: 77241.



The ball for this evening's match has been kindly donated by:-
Midland Light Pattern Co., Calow, Chesterfield

Chesterfield

FOOTBALL

CLUB LIMITED



Registered Office
RECREATION GROUND, CHESTERFIELD S40 4SX Tel. 32318

President
His Grace The Duke of Devonshire, M.C., D.L., J.P.
Vice-President G. Kenning, Esq., D.F.C., T.D., M.A.

Directors
Mr. Dan B. Newton (Chairman)
Mr. Percival C. J. T. Kirkman, O.B.E. (Vice-Chairman)

Mr. Frank Tuckley Mr. Arnold Bates
Mr. Ernest Brocklehurst Mr. E. I. Gaunt
Team Manager Mr. I. Shaw
General Manager and Secretary Mr. A. G. Sutherland
Honorary Medical Officer Dr. R. H. Richardson

Official Programme and Advertising Rights Published by
The Chesterfield Football Club Limited
Printed by Whittington Moor Printing Works, Chesterfield

Chesterfield

Royal Blue Shirts, White Shorts

- 1 Phil TINGAY
- 2 Ken TILER
- 3 Ken BURTON
- 4 Arthur BELLAMY
- 5 Eric WINSTANLEY
- 6 Frank BARLOW
- 7 Malcolm DARLING
- 8 Ernie MOSS
- 9 Andy KOWALSKI
- 10 Dave WILSON
- 11 Terry SHANAHAN

Subs.

Referee:

Mr. G. Nolan

Swindon Town

Red Shirts, Black Shorts

- 1 Jim BARRON
- 2 Wilfred DIXON
- 3 John TROLLOPE
- 4 Terry HUBBARD
- 5 Ron POTTER
- 6 Tom PROPHET
- 7 David MOSS
- 8 David SYRETT
- 9 Peter EASTOE
- 10 Hugh MACLEAN
- 11 Tom JENKINS

Sub.

Linesmen

Yellow Flag

Mr. J. Bradshaw

Red Flag

Mr. H. R. Hall

E. H. GROSVENOR CATERING

Co. Ltd

6 ASHGATE ROAD CHESTERFIELD

Tel: 70161/2/3

Saltergate

CHATTER



Joe Shaw writes . . .

We tackle Swindon Town tonight fully determined to try and prove once again that we can really play football — good entertaining football — and at the same time show quite conclusively that the 5-0 defeat suffered at Hereford last Saturday is not going to upset our plans.

When Tranmere Rovers were here last Wednesday we managed to take our winning sequence to three with a 1-0 victory gained through a splendid goal by Eric Winstanley following good work by Andy Kowalski, but the plain fact about that game is that we did not play

nearly so well as we did against Grimsby Town and Halifax Town. There was a period of about 20 minutes when we did do well and that was when we scored.

Overall, we were not as happy about the game with Tranmere as we had been in those two previous games when we played some really delightful football and so we were rather pleased that the points came our way despite the failings. Sometimes you can play far better and finish on the losing side. This is what repeatedly happens in this game.

Last Saturday at Hereford we did not play well at all, but there was never five goals difference between the home side and ourselves. Two of their goals came from penalties. The first was from a foul which we alleged to have been committed outside the area, while the second was, without doubt, a very harsh decision.

Even so, it was far from being one of our best performances and we must learn quickly from our mistakes. There were too many of our players not releasing the ball quickly enough on the sticky surface. The fact is that a team can very often get away with it when one or two players are off form, but when more than that have an off day at the same time one cannot expect to win. We must get to grips with the situation and work even harder in training.

Setbacks like the one at Hereford must make us realise that we have to try even harder and make absolutely certain that it does not happen again. There is no doubt about it, the opposition in the Third Division this season is even tougher than last, and the sooner we come down to earth and realise it the better it will be for us all.

I am positive that if we can get our priorities right, such as self discipline on the field of play, we are quite capable of giving anybody a thorough test. We have shown that we can entertain and at the same time win matches and we are not going to let that Hereford blow prevent us from doing so again.

R. J. STOKES & CO., LTD.

for all your

PAINT : WALLPAPER : TILES

VISIT OUR SHOWROOM AT

KNIFESMITH :: CHESTERFIELD

Telephone 32772

BRANCHES AT : SHEFFIELD - ROTHERHAM - WREXHAM

Tonight we extend a hearty welcome to Danny Williams and his men from Swindon. Last season they came here in the Football League Cup second round and we managed to beat them 1-0. They were then members of the Second Division, but suffered relegation at the end of the campaign. At that time Danny was the manager of Mansfield Town, whom he left to start a second period as manager of Swindon too late to be able to do much about saving them from the drop.

A former Rotherham United stalwart, Danny took Swindon to Wembley in 1968/69 in his first spell as their manager and they carried off the Football League Cup by defeating Arsenal 3-1 in the final. Later Danny moved to Hillsborough to try and help Sheffield Wednesday recapture some of their lost glory, but things did not work out for him and he eventually took over at Mansfield, but the call came again from Swindon and back he went.

Apart from that Cup success Swindon Town have never achieved much glory. Joining the Football League Division Three Southern Section in 1920 they won their first game, which was against Luton Town at home, by 9-1, but they never managed to get out of that division, in fact they had to seek re-election three times.

However when the League was re-formed to take in the Fourth Division in 1958/59 Swindon did manage to claim a place in the new Third Division. In 1962/63 they managed to finish as runners-up and were promoted to the Second Division.

Their stay there however only lasted two seasons and it was back to the Third Division again. The end of the 1968/69 season saw them again finish as runners-up to regain a Second Division place, but now they are again back in the Third Division.

On Saturday we have another really stiff fixture — against Crystal Palace at Selhurst Park. Palace are managed by another well-known character, Malcolm Allison. Palace have dropped down from the First Division to the Third Division in successive seasons, but judging by their start to the current season they are determined to quickly get back into the higher sphere. They won their first four home matches in splendid style, scoring 11 goals and only conceding three and so we realise that we will have to be at our best in trying to break their record.

Following tonight's match our next Third Division home fixture is on Saturday week when the visitors will be Blackburn Rovers, who have also made an encouraging start to the season. Four days after that we will be at home again, this time to Bournemouth, who already have two away wins to their credit.

I hope that by the time these two home games come along we will be in a much happier frame of mind as far as our performances are concerned. It will certainly not be for the want of trying if that is not so. Determination to do better is a big thing and that's just the frame of mind we are in at the moment.

DERBY EVENING

TELEGRAPH

FOOTBALL SPECIAL

For Full reports

of

THE BLUES

Matches

TODAY'S VISITORS



JAMES ALLAN (Goalkeeper)—Born Inverness. Signed as an Apprentice Professional from Brora Rangers in October, 1970, and signed professional in July, 1971. He made his debut in the first team in September, 1971.

JOE BUTLER (Full Back) — Born Newcastle. Joined Swindon from Newcastle United in August, 1965, where he graduated to the senior ranks through the Club's Junior Team. Played in Football League Cup Final winning team of Season 1968/69. Played in League Cup Winners Cup winning team of 1969, and in Anglo Italian Inter Club Competition winning team Season 1969-70.

FRANK BURROWS (Centre Half) — Born Larkhall, Scotland. Joined the Club from Scunthorpe United for whom he played 3 seasons. Formerly with Raith Rovers. A strong defender who has made his mark in the first team. Regular member of promotion winning side of Season 1968/69. Played in Football League Cup Final winning team of Season 1968/69. Played in League Cup Winners Cup winning team of 1969, and in Anglo Italian Inter Club Competition winning team Season 1969/70.

KEN STROUD (Midfield) — Born London. Signed as an apprentice in 1967 and signed professional forms in 1970. This skilful player is rapidly becoming a contender for a regular first team place.

JOHN TROLLOPE (Full Back) — Born Wroughton, near Swindon. Joined the Club from school and has become its longest serving professional, signing in August, 1960. Since his League debut at the age of 16 he has made over 600 appearances for Swindon.

TERRY HUBBARD (Inside Forward) — Born Newport. Joined Club as an Apprentice Professional. Signed professional 1969. Has now established himself as a regular first team and Welsh Under 23 player.

DAVID MOSS (Outside Right) — Born Witney. Was spotted playing in junior soccer and signed professional 1969.

TOM JENKINS (Winger) — Born London. Signed from Southampton in October, 1972, after Swindon had sold Don Rogers to Crystal Palace. Formerly with Orient and Reading he also had a spell with Southern League Margate.

MICK McGOVERN (Forward) — Born Hayes. Signed from Queens Park Rangers in February, 1973 and formerly played in London amateur soccer.

RON POTTER (Left Half) — Born Wolverhampton. He started his career with West Bromwich Albion as a centre half where his opportunities were limited. Transferred to Swindon November, 1970.

DAVID SYRETT (Forward) — Born Salisbury. Joined the Club as an Apprentice Professional on the 13th July, 1972, and as a professional on the 8th November, 1973. During the past season he became a member of the first team squad and was also a member of the England Youth Team.

JOHN McLAUGHLIN (Right Back) — Born Edmonton, London. A former England Youth International. John joined the Club from Colchester on the 3rd December, 1973, and has made the left back position his own.

Swindon Town Football Club

The story of Swindon Town is practically the story of football South of the Thames. Founded in 1881 by a clergyman, the Rev. W. Pitt, as an amateur club, it was quickly accepted as the best in Wiltshire, and the Wilts Cup was nearly always held by Swindon Town; in fact, one season the final was contested between the first and the second teams of the one club.

In time it broadened its attitude, began to engage professionals in 1894 and was accepted as one of the original members of the Southern League Div. 1, in which it had, with Millwall and Southampton, continuous membership from the inception in 1894 to 1920 when, with its fellow clubs, it became a founder-member of Division 3 (S) of the Football League.

During this period it had varied fortunes. It finished its first season at the foot of the table and so became a wholly professional side with a wage bill of £10 a week. In 1900 it reached fourth position, but its financial resources were so inadequate that it had to part with many good players, several of whom went to Nottingham Forest. In 1902 it was a bad last and the "Railwaymen" were in sore straits. Thanks, however, to the hard work of such men as Sam Allen, a devoted club-man, difficulties were overcome for a time.

Season 1907-8 began its most memorable period. Swindon Town entered the F.A. Cup for the first time, reached the third round and three years later got to the semi-final to be beaten by Newcastle United, the ultimate winners, at Tottenham.

Two years later it again reached the semi-final, losing to Barnsley in a replay. Between 1907 and 1914 they won the Southern League Championship twice and were never lower than fifth in the final tables.

Since Swindon Town has been in the Football League it has been obliged to seek re-election in the years 1933, 1956 and 1957 and five times reaching fourth place before finally gaining promotion to Division II at the conclusion of Season 1962/63 when it finished in second position in Division III.

Following an outstanding start in 1963/64 when it set up a record for a new promoted Club, being undefeated for 9 games, the Town finished well down in The League. The following season saw them relegated to Division III after only two seasons in the higher sphere.

The Club again gained promotion to Division II at the Conclusion of Season 1968/69, being runners up to Watford. During the same Season they beat Arsenal 3-1 at Wembley to win the Football League Cup Competition.

Its F.A. Cup record as a Football League Club shows that it has reached the fourth round of the Competition nine times, the fifth round four times and the sixth round twice, this being in 1925 and 1970.

Originally the Swindon team played in green shirts on the Croft, but they moved to the County Ground in 1896 and they have occupied it since then without interruption, even in war-time. Its capacity is now 31,000 but the highest pre-war attendance was 24,730 at the Cup-tie with Burnley in 1929 this was easily surpassed at the F.A. Cup game with Arsenal in January, 1972, when the record 32,000 was established. Naturally, with so long a history of professional players, many outstanding men have been connected with the Club. Perhaps the best known was Harold Fleming, always an attractive and dangerous inside forward, capped nine times for England. In more recent years the names of Billy Lucas capped for Wales, Norman Uprichard for Ireland, Mike Summerbee for England, Ernie Hunt who gained an 'Under 23 cap' and Don Rogers spring more readily to mind. At the present time we have in the team R. Thomas who has been capped for Wales and Ray Treacy who has played for the Ireland many times.

Winners of the League-Cup Winners Cup Competition in 1969, against Roma and Anglo-Italian Inter-League Clubs Competition in 1970 against Naples in the inaugural year of both Competitions.

Why not join the

SALTERGATE SOCIAL CLUB

★ ★ ★
BINGO TOTE DANCING

★ ★ ★
WEEKEND ENTERTAINMENT

FOR QUALITY PRINTING



WHITTINGTON MOOR PRINTING WORKS
(Rear of Travellers Rest)
Sub-Station Lane, Whittington Moor, Chesterfield
Telephone Chesterfield 5578

Supporters' Special

Supporters buses are being arranged to
travel to the following away game—

CRYSTAL PALACE

Depart Social Club SATURDAY, October 5th
at 9.00 am

Price £1.30 O.A.P. £1.15

Please book early to avoid disappointment

The Chesterfield Team eat at the

SHOULDER OF MUTTON INN HARDSTOFT

why not you?

Three miles off the Heath intersection of the M1 motorway

Luncheon Every Day

Dinners Every week Day

Public Dinner Dance Every Saturday Night

Private parties catered for up to 300 persons

We wish to express our appreciation to

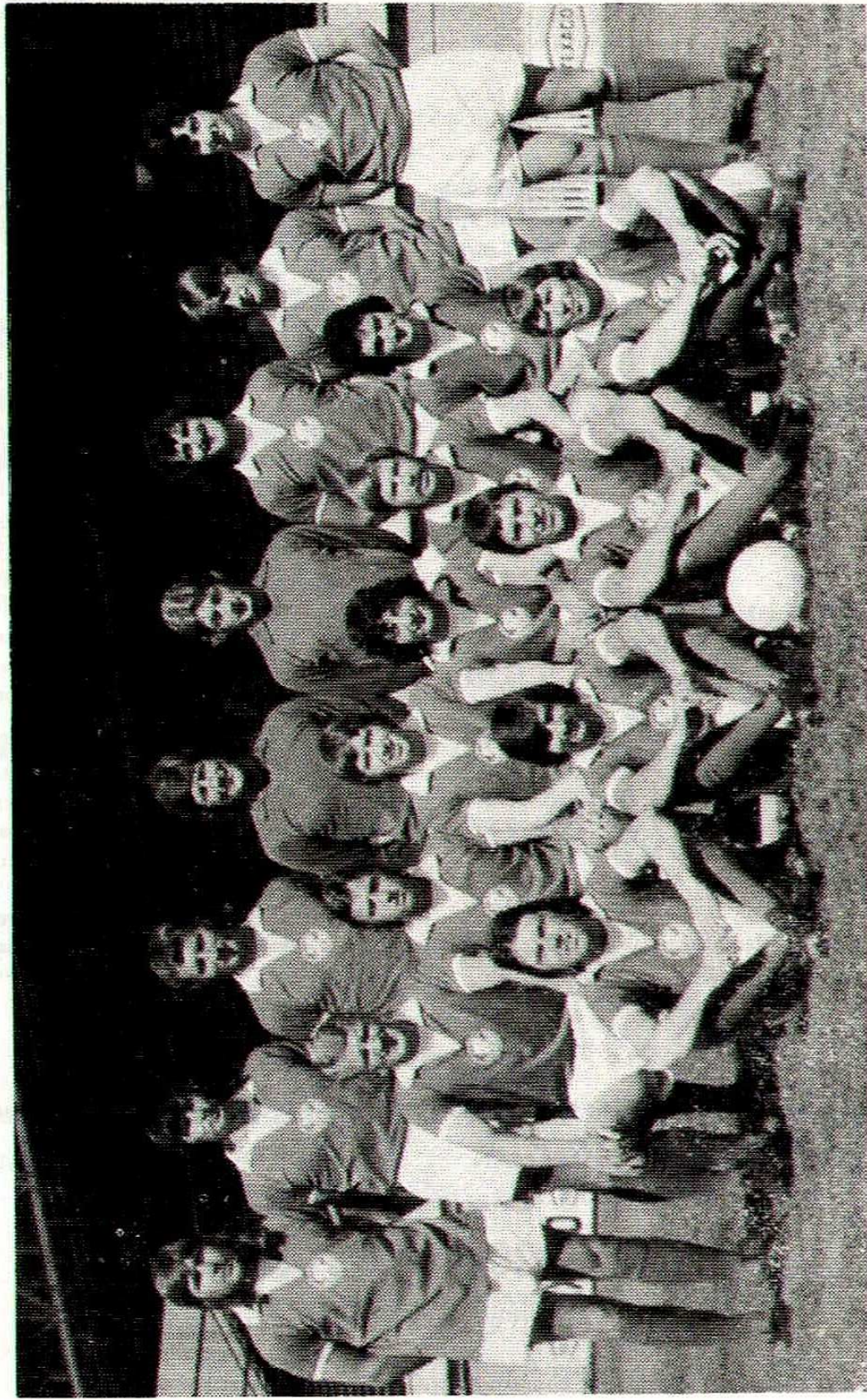
C. E. HUDSON & SON LIMITED

Musical Centre

5a, MARKET PLACE, CHESTERFIELD

FOR RECORDS PROVIDED FOR YOUR MUSICAL ENTERTAINMENT
AT TODAY'S GAME

SWINDON TOWN F.C.



Back Row: D. Munks, R. Potter, D. McGovern, J. Barron, J. Allen, F. Burrows, T. Jenkins, R. Clarke.
Middle Row: N. Trollope, D. Moss, P. Eastoe, D. Syrett, D. Hubbard, H. Maclean.
Front Row: J. McLaughlin, W. Dixon, K. Stroud, J. Butler.

Bournemouth's outstanding defence

by Tony Pullein

After beating Brighton 2-0, Bournemouth boasted the finest defensive record in all four divisions. One goal conceded in six League games was a fine achievement though it was disappointing that that solitary goal should have cost them both points at Hereford.

Bournemouth's win was another blow to Brighton's hopes yet, in spite of a poor start, they still head the divisional crowds chart. Leading positions:

	Aggregate	Average
1 Brighton	61,687	15,422
2 Crystal Palace	42,006	14,002
3 Preston	59,424	11,885
4 Peterborough	30,045	10,015
5 Southend United	47,091	9,418
6 Plymouth	23,839	7,946
7 Hereford United	38,283	7,657
8 Blackburn Rovers	22,132	7,377
9 Watford	21,951	7,317
10 Bournemouth	21,885	7,295

(at September 21st, 1974)

I cannot recall any player having been booked for a foul on his own brother but it almost happened at Selhurst Park! Palace's Alan Whittle was facing younger brother Keith, the Wrexham player and, in one incident, Keith had to receive the trainer's attention following a hefty tackle by his brother.

Charlton Athletic, trailing 0-2 at home to Swindon, made a fine recovery to take a 3-2 lead — only to see the visitors grab a late equaliser. In spite of their come-back effort, Charlton's manager Andy Nelson was far from pleased with their performance, intimating afterwards that if there is no quick improvement he might have to go into the transfer market.

One of Charlton's goals was from a Bob Curtis penalty, making him the Third Division's leading spot-kick expert with four to his credit. Next come Leslie (Colchester) with three, Whittle (Crystal Palace) and McHale (Chesterfield) two each, and Oates (Blackburn), Binney (Brighton), Rafferty (Plymouth), Richardson (Gillingham), Lindsey (Gillingham), McNeil (Hereford), Crossley (Tranmere), Wright (Walsall), Horton (Port Vale), Boylen (Grimsby), Moss (Swindon), Rudd (Bury), Shanahan (Halifax), Lindsay (Colchester) and Walden (Aldershot) with one each.

Walsall have asked for League permission to switch their home matches to Friday evenings for an experimental period. Matters came to a head when a mere 2,927 — their smallest Saturday crowd since the war — turned up to see the Saddlers play Tranmere. The club is currently losing some £700 per week and, as home games clashed with neighbouring Wolves and Aston Villa, Walsall hope Friday night soccer could prove their salvation.

HUMBER :: HILLMAN :: SUNBEAM :: SIMCA

ERNEST BROCKLEHURST & SON LTD.

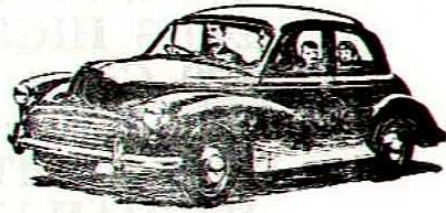
SHEFFIELD ROAD :: CHESTERFIELD

Always a choice of Selected Used Cars available

Telephone Chesterfield 5383-6 or 5794

**FOLLOW
THE
BLUES**

Going by Car ?



To Crystal Palace

Chesterfield to Heath
M1 Motorway to London

Entering London leave Motorway at intersection 4 on to Edgware Road. Over Vauxhall Bridge, then take the A23 to Streatham Common, left on to A214, turn right on to A215 straight to Crystal Palace.

Here are your Route details

ARNOLD LAVER

AND COMPANY LIMITED

BRIMINGTON ROAD, CHESTERFIELD

Telephones 72241 (4 lines)

SOFTWOODS, HARDWOODS AND PLYWOODS

TANALIZING AND KILN DRYING

FORMICA, WARERITE, SUPERDEC AND DECAMEL

GROVEWOOD KITCHEN UNITS

DOORS, WINDOWS, INTERWOVEN FENCING AND LADDERS

Visit our Showrooms for all Decorative DIY Materials

CHESTERFIELD FOOTBALL CLUB AUXILIARY FUND

Registered under the Small Lotteries and Gaming Act 1956

Promoter: A. G. Sutherland, 13 Highbury Road, Chesterfield

Office: Recreation Ground, Chesterfield S40 4SX Telephone 32318

£40 INSTANT BINGO
£40 3 HIGHEST SCORING F/T
£20 Correct TOTE TREBLE
£10 Reverse
£130 FRUIT SYMBOLS
£90 DAILY DRAW

GOLDEN GOAL TICKET

HAVE YOU GOT YOUR TICKET FOR TODAY'S GAME?

TWO CHANCES ON ONE TICKET FOR 5p

£10 for first goal in 1st 45 minutes
£10 for first goal in 2nd 45 minutes
Golden Goaltimes v. TRANMERE R.
1st goal 73 mins. 40 secs.

SUPPORT YOUR CLUB

By Selling our tickets

Three highest scores

Saturday September 28th 1974, West Ham, with any 2 of:-
Birmingham, Burnley, Everton, Luton, Blackpool, West Brom, York
21 winners £1.90 each. Agents commission 19p each

Lucky programme No.

v. Tranmere 0875

Winner receives 2 free Stand Tickets from Auxiliary Office

HAVE YOU VISITED THE CLUB SHOP NOW OPEN
AS PART OF THE AUXILIARY FUND ON THE MAIN
CAR PARK?

LIST OF BALL DONORS 1974/5

- AUGUST 21st. GRIMSBY TOWN.**
A. J. Thickett, Automobile Engineers, Soresby Street, Chesterfield.
- AUGUST 24th. WREXHAM.**
The Derbyshire Times Ltd., Station Road, Chesterfield.
- SEPTEMBER 7th. COLCHESTER UNITED.**
Councillor J. Ford, 10 Ringwood Avenue, Brimington.
- SEPTEMBER 21st. GRIMSBY TOWN.**
East Midland Motor Services, Park Road, Chesterfield.
- SEPTEMBER 25th.**
Mintabel Construction Ltd., Brent Close, Loundsley Green, Chesterfield
- OCTOBER 2nd. SWINDON TOWN.**
Midland Light Pattern Co., Calow, Chesterfield.
- OCTOBER 12th. BLACKBURN ROVERS.**
Mr. A. Ibbotson, Elm Tree Farm, Barlow, Chesterfield.
- OCTOBER 16th. BOURNEMOUTH.**
Messrs. Woodhead Cafe Ltd. & Burlington Grill, High Street,
- OCTOBER 26th. WATFORD.**
P. Mullan, Mullan Bros. Ltd., Whittington Moor, Chesterfield.
- NOVEMBER 2nd. WALSALL.**
Wye Electronics Ltd., 117, Saltergate, Chesterfield.
- NOVEMBER 16th. PETERBOROUGH UNITED.**
Messrs. S. Swale & Sons Ltd., Sheffield Road, Chesterfield.
- NOVEMBER 30th. PLYMOUTH.**
Frank Hill, Jeweller, West Bars, Chesterfield.
- DECEMBER 26th. HUDDERSFIELD.**
Beecham Foods Ltd., London.
- JANUARY 4th. HALIFAX TOWN.**
Anonymous.
- JANUARY 11th. ALDERSHOT.**
Tyre Technicians Ltd.,
- FEBRUARY 1st. PORT VALE.**
Mr. R. Woolley, Hill Ayre, Mosborough, Sheffield.
- FEBRUARY 15th. BURY.**
T. E. Needham, Dairyman, Laiterie, Peveril Road, Chesterfield.
- MARCH 1st. BRIGHTON & HOVE ALBION.**
Pork Butchers, Low Pavement, Chesterfield.
- MARCH 15th. HEREFORD UNITED.**
Dransfield Novelty Co. Ltd., 63, Saville Street, Leeds.
- MARCH 19th. SOUTHEND UNITED.**
Whittington Moor Printing Works.
- MARCH 29th. GILLINGHAM.**
Anonymous.
- MARCH 31st. PRESTON N.E.**
Woodhead Cafe Ltd. & Burlington Grill, High Street, Chesterfield.
- APRIL 12th. CRYSTAL PALACE.**
Mr. & Mrs. D. T. Eyre, Torquay.
- APRIL 26th. CHARLTON ATHLETIC.**
Mini Mix Concrete, Chesterfield. Telephone 73930.

Join THE Winning Team!

.. JOIN THE MEN IN MODERN MINING

There are VACANCIES for SKILLED & SEMI-SKILLED MEN at most local collieries, also APPRENTICESHIPS and Training Schemes for boys under 18 years of age.

Apply for details of jobs and career opportunities to:-

Mr. H. CHALLANDS, Head of Manpower, National Coal Board, North Derbyshire Area, Bolsover, Chesterfield. Tel. Bolsover 2231



RESULTS FIXTURES LEAGUE TABLES

1974	
Aug.	17—Southend Utd. ... a
	21—League Cup 1
	24—WREXHAM ... h
	31—Brighton & H.A. ... a
Sept.	4—Bournemouth ... a
	7—COLCHESTER U. ... h
	11—League Cup 2
	14—Huddersfield T. ... a
	17—Halifax T. ... a
	21—GRIMSBY T. ... h
	25—TRANMERE R. ... h
	28—Hereford U. ... a
Oct.	2—SWINDON T. ... h
	5—Crystal P. ... a
	9—League Cup 3
	12—BLACKBURN R. ... h
	16—BOURNEM' TH ... h
	19—Charlton A. ... a
	26—WATFORD ... h
Nov.	2—WALSALL ... h
	5—Swindon T. ... a
	9—Port Vale ... a
	13—League Cup 4
	16—PETERBORO' U. ... h
	23—F.A. Cup 1
	30—PLYMOUTH A. ... h
Dec.	4—League Cup 5
	7—Aldershot ... a
	14—F.A. Cup 2
	21—Gillingham ... a
	26—HUDDERSFIELD ... h
	28—Preston N.E. ... a
1975	
Jan.	4—HALIFAX T. ... h
	11—ALDERSHOT ... h
	15—League Cup Semi-F.
	18—Plymouth A. ... a
	22—League Cup Final
	25—Bury ... a
Feb.	1—PORT VALE ... h
	8—Walsall ... a
	15—BURY ... h
	22—Peterborough U. ... a
Mar.	1—BRIGHTON ... h
	7—Tranmere R. ... a
	15—HEREFORD U. ... h
	19—SOUTHEND U. ... h
	22—Colchester U. ... a
	28—Grimsby T. ... a
	29—GILLINGHAM ... h
	31—PRESTON N.E. ... h
Apr.	5—Watford ... a
	12—CRYSTAL P. ... h
	19—Blackburn R. ... a
	21—Wrexham ... a
	26—CHARLTON A. ... h

Man in the middle

GEORGE NOLAN (Hazel Grove, Cheshire)

The deputy headmaster of a large comprehensive school, he started refereeing in South Wales and served on the Welsh League before moving to Cheshire. Officiated in the Cheshire League and appointed on to the League line in 1968 and then the supplementary list. Promoted to the full list this season. Married with two sons, he officiated in the 1973 England v Wales schoolboy international and the England v Ireland amateur youth international last season. He lists his hobbies as "my family — and football".

Chesterfield v Leeds

A first half in which Chesterfield dominated a Leeds side and produced a 4 goal half time lead had the home supporters thinking just how many goals Chesterfield would score. A superbly headed goal by centre half and captain Les Hunter started the goal spree. Bailey quickly added a second, and 2 more goals in the space of 2 minutes by Hunter and Coupland put Chesterfield in a commanding lead. However, Leeds showed that they have the same spirit as their seniors by pulling all the goals back to make a draw, 4 each. This was a tremendous fight back and if the game had been 5 minutes longer Leeds were so much on top that they might well have won. So from the dizzy heights of a 4 goal lead, Chesterfield were brought down to earth with a bump, they however had played a large part in a game of thrills and entertainment for the crowd.

Hardwick, Brookes, West, Duncombe, Hunter, Atkinson, Hartley, Coupland, Bailey, Featherstone, O'Neill. Sub.: Woods.

DIVISION THREE

	P	W	D	L	F	A	W	D	L	F	A	P
Preston	10	5	1	0	14	4	1	1	2	4	5	14
Southend	10	5	0	1	13	4	1	1	2	1	3	13
Crystal P.	9	4	0	0	11	3	2	0	3	3	6	12
Blackburn	8	4	0	0	6	2	1	2	1	3	4	12
Colchester	9	3	1	1	7	3	1	2	1	4	4	11
Peterborough	8	2	2	0	5	2	2	1	1	5	5	11
Walsall	9	3	1	0	7	2	1	2	2	6	9	11
Watford	10	2	2	0	7	4	1	3	2	7	10	11
Charlton	9	3	1	0	8	4	1	1	3	4	9	10
Swindon	10	3	2	1	9	6	0	2	2	7	13	10
Bournemouth	7	2	1	0	4	0	2	0	2	4	6	9
Bury	10	1	2	1	4	2	2	1	3	4	7	9
CHESTERFIELD	9	3	1	0	7	2	1	0	4	5	12	9
Wrexham	8	2	2	0	10	4	1	0	3	4	8	8
Hereford	10	4	0	2	11	2	0	0	4	1	9	8
Port Vale	8	2	1	0	7	3	0	3	2	4	8	8
Brighton	9	3	2	0	6	2	0	0	4	1	7	8
Plymouth A.	10	3	1	0	8	3	0	0	6	5	15	7
Gillingham	9	1	3	1	4	4	0	2	2	2	5	7
Halifax	10	1	2	2	7	8	0	3	2	4	9	7
Grimsby	8	2	1	2	9	6	0	1	2	2	5	6
Tranmere	9	2	1	1	4	2	0	1	4	2	8	6
Huddersfield	7	2	0	2	6	4	0	0	3	0	5	4
Aldershot	10	2	0	3	7	8	0	1	4	2	9	4

Scorecheck

			HT	FT
A	York C. J.	Chesterfield J.		
B	Sheffield W.	Sunderland		
C	Aldershot	Halifax		
D	Blackburn	Gillingham		
E	Bournemouth	Wrexham		
F	Peterborough	Southend		
G	Watford	Hereford U.		
H	Chester	Doncaster		
J	Crewe A.	Torquay U.		
K	Exeter C.	Bradford C.		
L				
M				
N				
O				
P				
R				
S				
T				
U				
V				
W				
X				
Y				
Z				



R. A. SMITH

LIMITED

BUILDERS &
CONTRACTORS

DRONFIELD

Telephones 3771 and 4562

ELLIOTT'S

DISPENSING CHEMISTS
NEWBOLD ROAD PHARMACY

Telephone 2387

Medical

*Photographic and
Cosmetic Requirements*

Trusses

*Elastic Hosiery and
Oxygen Service*

EMERGENCY SERVICE

Telephone Sheffield 362618

EAST MIDLAND

Excursions to most away
matches

See panel opposite for next excursion

East Midland Motor Services Limited
New Street, Chesterfield. Tel. 77451